

NOT PROTECTIVELY MARKED

Neighbourhood Profile Update Cambridge City South Neighbourhood

May 2010



Steve Kerridge,
Neighbourhood Policing
Inspector

**Lynda Kilkelly, Strategy
Officer (Community Safety),
Cambridge City Council**



NOT PROTECTIVELY MARKED

CONTENTS

| | |
|---|----------|
| 1. INTRODUCTION | 2 |
| Aim | 2 |
| Methodology | 2 |
| 2. PREVIOUS PRIORITIES & ENGAGEMENT ACTIVITY | 3 |
| Previous Priorities | 3 |
| 3. EMERGING ISSUES | 4 |
| 4. RECOMMENDATIONS | 6 |
| 5. CURRENT CRIME AND INCIDENT LEVELS | 7 |

1. Introduction

Aim

The aim of the Neighbourhood profile update is to provide an overview of action taken since the last reporting period, identify ongoing and emerging crime and disorder issues, and provide recommendations for future priorities and activity in order to facilitate effective policing and partnership working in the area.

The document should be used to inform multi-agency neighbourhood panel meetings and neighbourhood policing teams, so that issues can be identified, effectively prioritised and partnership problem solving activity undertaken.

Methodology

This document was produced using the following data sources:

- Crime and Incident data from February 10 – May 10 and as a comparison data from October 09 – January 10 and February 09 – May 09.
- Information from the Neighbourhood Policing teams, June 10
- Cambridge City Council, City Services data, February 10 – May 10.

2. Previous Priorities & Engagement Activity

Previous Priorities

At the neighbourhood panel meeting on 11th March 2010, the following issues were adopted as priorities. The tables below summarise action taken and the current situation regarding the priorities which were set:

| Provision of Community Updates and Feedback Concerning Burglary of Homes across City South | |
|---|---|
| Objective | This matter was raised at the March City South Committee and supported as a Neighbourhood Priority by members. It relates to a request for more frequent and detailed provision of information concerning Burglaries. Whilst Burglary is comparatively low in the South of the City, the Area Committee stated that the frequency and detail of information received by communities concerning this most worrying of offences needed to be better to increase understanding and confidence and cement the two-way flow of information to seek to prevent and detect offences. |
| Action Taken | <ol style="list-style-type: none"> 1. The provision of an update on Burglary of homes and related matters has now been circulated on a weekly basis since the adoption of this as a priority. 2. Content has sought to focus on making sure that all City South residents are not just aware of offence levels, but the specifics of offences and modus operandi, what to consider and what to look out for in seeking to prevent offences and aiding the Constabulary in identifying and challenging suspicious activity. 3. Formal circulation is to Councillors, E-cops subscribers and Neighbourhood Watch Members but City South staff have been using the detail of each weekly update to inform face-to-face contact with residents both formally and informally during duties. |
| Current Situation | Agreed revised protocol is being honoured weekly and feedback to date has been positive. There is minimal work to sustain this process and the benefits more than proportionate. |
| Continue or Discharge? | Suggest discharge – This process should be viewed as “business as usual” and the Neighbourhood Sergeant will ensure that learning from this priority is adopted fully henceforth. |

| Continue to tackle anti-social behaviour in Paget Road and Foster Road, Trumpington | |
|--|--|
| Objective | To tackle ASB in the above area and identify and tackle those responsible for this behaviour |
| Action Taken | <p>The Police and ASB team have met with affected residents to reassure them that the reports of ASB are being acted upon.</p> <p>The ASB team is currently working with the Police and residents in order</p> |

| | |
|-------------------------------|--|
| | to take legal action against a number of tenants. |
| Current Situation | |
| Continue or Discharge? | Continue – work to tackle those responsible is still ongoing. |

| Tackle anti-social behaviour in Tenby Close, Cherry Hinton. | |
|--|--|
| Objective | To tackle Anti-social Behaviour in Tenby Close |
| Action Taken | The City Council Anti-social Behaviour Team are working with the police to resolve this issue. Continuing work with the ASB multi-agency Problem Solving group is endeavouring to find a solution. |
| Current Situation | |
| Continue or Discharge? | Continue – work to tackle this issue is still ongoing |

Engagement Activity

Engagement events permitting members of the public to meet the City South and other Cambridge City Neighbourhood Policing Teams are listed on the Constabulary's website.

They include monthly surgeries at The Cherry Hinton Village Centre and Addenbrooke's Concourse at which all are welcome.

For further details please visit www.cambs.police.uk and look for the "My Neighbourhood" link or call 0345 456 456 4.

For more private matters, officers will be happy to arrange a meeting at your convenience or discuss matters via telephone.

Emerging Issues

Neighbourhood trends

Offence levels across City South have remained stable compared to the previous period with 532 offences in each period. Anti-social behaviour (ASB) incidents have also remained stable compared the previous period but decreased compared to the same period last year.

Trumpington

- Total crime in Trumpington has increased compared to the previous period (217 offences vs. 208 offences) but decreased compared to the same period last year.
- There were 12 dwelling burglaries in this period compared to six in the previous period and nine in the same period last year. Most of the properties were entered via the rear either through a forced window or door.
- Burglary other offences have increased from nine offences in the previous period to 14 offences in this period. In four of these offences offenders have entered building sites and stolen metal piping or cabling from within.

NOT PROTECTIVELY MARKED

- Violent crime offences have decreased from 42 offences in the previous period to 34 offences in this period. Four offences occurred at the Shell Filling Station on the High Street, two of these offences concern the same incident in which five males had verbal altercation on the forecourt.
- There were 18 theft from vehicle offences in this period compared to 23 offences in the previous period and 27 offences in the same period last year. Three offences occurred at the a restaurant the High Street on separate dates during the period. In two of the offences at the restaurant vehicles had their windows smashed and iPods stolen.
- Cycle theft offences have remained stable compared to the previous period (48 offences vs. 45 offences). Common locations for cycle theft offences were Station Road (9), particularly at the railway station, Gonville Place (6) and Lensfield Road (4).
- Theft from a shop offences have increased compared to the previous period (25 offences vs. 15 offences) and the same period last year (10 offences). Twenty four of these offences occurred at Waitrose, Hauxton.
- ASB incidents have decreased from 157 incidents in the previous period to 146 incidents in this period. There were 19 incidents in the area of Princess Court and Hanover Court. Three of the incidents concern noise in particular loud music at the location, several concern people who are drunk and causing a disturbance whilst a couple refer to malicious text messages.
- Between February and May 2010 there were 8 reports of abandoned vehicles in the ward compared with 13 during the same period the previous year. This included three vehicles, which were not on site following inspection and illegally parked stickers were applied to a further two vehicles. There were no specific hotspots but Long Road (3) was a hotspot during the same period in 2009.
- Between February and May 2010 there were 25 reports of flytipping within the ward compared with 31 during the same period the previous year. All were removed within 24 hours and there was sufficient evidence to issue a warning letter to a domestic offender. Anstey Way (5), Gilpin Place, Hanover/Princess Court and Russell Court (all with 3) were the hotspots during this period. Anstey Way (5), Hanover/Princess Court (9) and Russell Court (5) were the hotspots during this period.
- Between February and May 2010, 18 derelict cycles were dealt with compared with 32 during the same period the previous year. Hills Road (4) was a hotspot. During the same period the previous year, Hanover Court (6) Foster Road (4) and Gonville Place (3) were the main hotspots.
- Between February and May 2010, 58 needles were reported in the ward, compared with 3 during the 2009 period. The increase in number was on account of two one-off reports with 31 needles found close to a property in Anstey Way and 22 close to another property at Hanover Court.
- Between February and May 2010, 7 items of graffiti were removed by the City Rangers compared with 13 items during the same period the pervious year. Trumpington Road (3) was a hotspot, whereas Lensfield Road (6) and Pemberton Terrace (4) were the hotspots during the 2009 period.

Cherry Hinton

- Total crime in Cherry Hinton has increased compared to the previous period (139 offences vs. 118 offences) but decreased compared to the same period last year.
- Dwelling burglary offences have remained stable compared to the previous period (21 offences vs. 20 offences). A common MO used appears to be forcing a rear window and stealing cash, laptops and jewellery.
- Violent crime offences have increased from 19 offences in the previous period to 34 offences in this period. Offence levels have remained stable compared to the same period last year when

there were 33 offences. Twelve of the incidents appear to be domestic violence between partners in a relationship.

- There were 12 theft from vehicle offences in this period compared with 15 offences in the previous period and eight offences in the same period last year. In four of the offences index plates were stolen from the vehicle and in another offence a catalytic converter was stolen.
- Criminal damage offences have increased compared to the previous period (26 offences vs. 19 offences) but decreased compared to the same period last year (48 offences). Three offences occurred at Cambridge International School, Cherry Hinton Road on consecutive days in April. In all three offences rocks or stones were thrown through the windows at the location.
- ASB incidents have increased from 101 incidents in the previous period to 128 incidents in this period. There was an incident hotspot in the area of Tenby Close, Bliss Way and Welstead Road. Six of the incidents in Tenby Close concern an elderly couple who state that youths are congregating around the location and being abusive to them. In the Bliss Way incidents; callers are complaining about youths congregating and riding scooters around in the area.
- Between February and May 2010 there were 11 reports of abandoned vehicles in the ward compared with 16 during the same period the previous year. This included 5 vehicles, which were later claimed by their owners and a further 3, which were impounded for not having valid road tax. Two of these were later destroyed for non-payment of the DVLA fine. There were no specific hotspots during either period.
- Between February and May 2010 there were 21 reports of flytipping within the ward compared with 50 during the same period the previous year. All were removed within 24 hours, but there was insufficient evidence to take enforcement action. Bliss Way with 4 reports was a hotspot during this period, compared with 5 reports during the same period in 2009. Other hotspots during the same period in 2009 were Colville Road (18), Teversham Drift (4), Kathleen Elliot Way and St Bede's Crescent (both 3).
- Between February and May 2010, 13 derelict cycles were dealt with compared with 19 during the same period the previous year. Ainsdale (4) and Burnham Close (3) were the hotspots compared with Wedgewood Drive (4) and Sunmead Walk (3) in 2009.
- Between February and May 2010, one needle was reported in the ward compared with no reports during the same period the previous year.
- Between February and May 2010, 4 items of graffiti were removed by the City Rangers compared with 2 items during the same period the previous year. Coldhams Lane (3) was a hotspot during this period.

Queen Ediths

- Burglary other offences have remained stable compared to the previous period (13 offences vs. 14 offences). Six of these offences occurred at schools or colleges. Offenders have stolen items such as plasma TV's, computers, laptops and cash.
- Violent crime offences have more than doubled compared to the previous period (16 offences vs. 35 offences) and increased compared to the same period last year (23 offences). Fifteen of these offences occurred at Addenbrookes hospital and all but two offences concern patients or their relatives either assaulting or being abusive to hospital staff. Eight of these 15 offences resulted in an offender being arrested and charged.
- Theft from vehicle offences have almost halved compared to both the previous period (91 offences vs. 20 offences) and the same period last year (20 offences). In six of the offences the vehicle windows were smashed; four of them occurred overnight and two in the daytime. Offenders stole easy top carry items such as bags, satellite navigation systems and MP3 players.
- Cycle theft offences have decreased compared to the previous period (31 offences vs. 46 offences) and compared to the same period last year (55 offences). Common locations for cycle theft offences were outside Addenbrookes Hospital and outside schools or colleges.

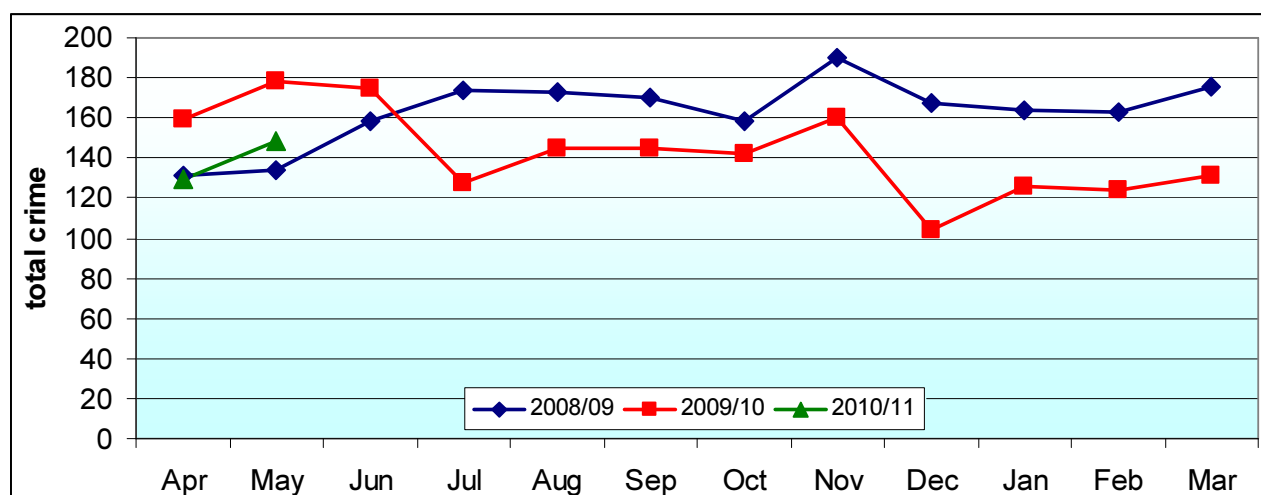
- ASB incidents in Queen Edith have decreased compared to both the previous period (116 incidents vs. 129 incidents) and the same period last year (145 incidents). There were 10 incidents at Addenbrookes Hospital, three of which patients who have been discharged refusing to leave the premises. Ten incidents occurred at Godwin Close, nine of which were at the same address with the informant complaining about noise from next door's building work, have things thrown at his house and unsolicited mail. Four incidents occurred at the Netherhall School, three concern youths congregating there and throwing things or being rowdy, whilst the fourth incident refers to a fight at the location.
- Between February and May 2010 there were 7 reports of abandoned vehicles in the ward compared with 4 during the same period the previous year. This included 2 vehicles which were not on site following inspection and a further two vehicles, which were later claimed by their owners. In addition, a CLE26 notice was issued to an offender on behalf of the DVLA for not displaying road tax on a public highway and will result in a fine issued by the DVLA. Another vehicle was also impounded on behalf of the DVLA for not having valid road tax and was subsequently destroyed for non-payment of the DVLA. There were no specific hotspots during both periods.
- Between February and May 2010 there were 11 reports of flytipping within the ward compared with 16 during the same period the previous year. All were removed within 24 hours, but there was insufficient evidence in order to take enforcement action. Limekiln Road was a hotspot during both periods, with 3 reports in 2010 and 4 reports in 2009.
- Between February and May 2010, 59 derelict cycles were dealt with compared with 46 during the same period the previous year. Hills Road (21, the majority removed from the Addenbrookes' site), Lilac Court (8) and Babraham Road Park and Ride (7) were the main hotspots. Babraham Park and Ride (18) and Baldock Way (5) were the main hotspots during the same period the previous year.
- Between February and May 2010, there were no needle reports, compared with 2 reports during the same period the previous year.

3. Recommendations

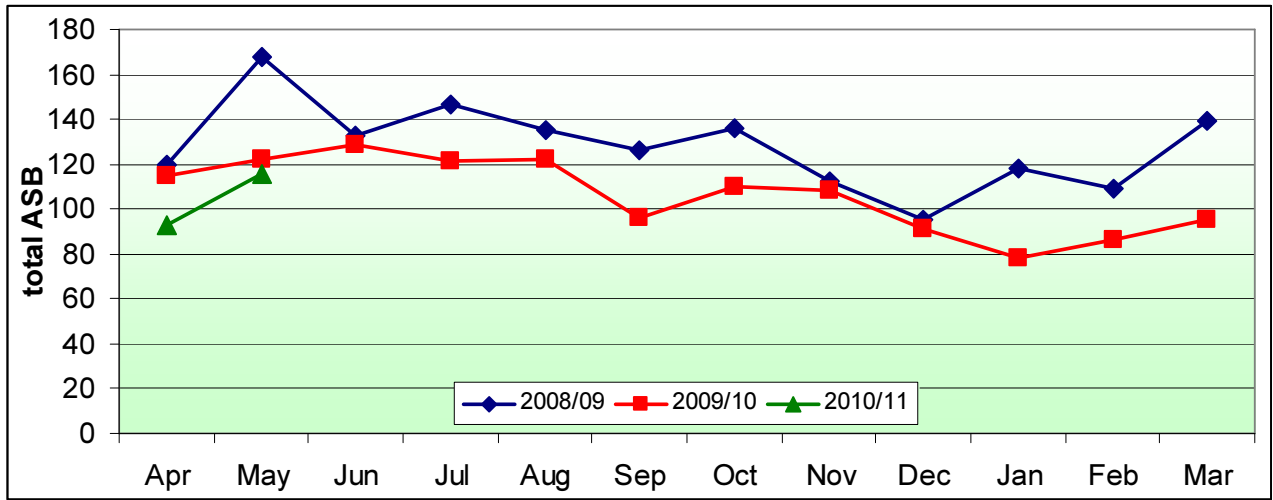
- Tackling the seasonal problem of trespass and ASB in the pits to the rear of the Spinney School.
- Continue to tackle anti-social behaviour in Paget Road and Foster Road, Trumpington
- Tackle anti-social behaviour in Tenby Close, Cherry Hinton

4. Current Crime and Incident Levels

Total Crime



Total ASB



NOT PROTECTIVELY MARKED

Current Crime and Incident Levels in Neighbourhood, by Ward

| | | | Dwell. Burg. | Other Burg. | Violent Crime | Robbery | Theft of Vehicle | Theft from Veh. | Cycle Theft | Theft from Shop | Criminal Damage | Other Crime | TOTAL CRIME | TOTAL ASB |
|-------|---------------|-----------------|--------------|-------------|---------------|---------|------------------|-----------------|-------------|-----------------|-----------------|-------------|-------------|-----------|
| Nhod | City South | Feb 10 – May 10 | 47 | 33 | 103 | 5 | 2 | 41 | 92 | 28 | 61 | 120 | 532 | 390 |
| | | Oct 09 – Jan 10 | 63 | 32 | 77 | 4 | 10 | 58 | 100 | 17 | 68 | 103 | 532 | 387 |
| | | Feb 09 – May 09 | 56 | 48 | 85 | 7 | 15 | 55 | 127 | 10 | 115 | 158 | 676 | 485 |
| Wards | Trumpington | Feb 10 – May 10 | 12 | 14 | 34 | 2 | 0 | 18 | 48 | 25 | 15 | 49 | 217 | 146 |
| | | Oct 09 – Jan 10 | 6 | 9 | 42 | 1 | 3 | 23 | 45 | 15 | 25 | 39 | 208 | 157 |
| | | Feb 09 – May 09 | 9 | 17 | 29 | 3 | 6 | 27 | 57 | 10 | 44 | 66 | 268 | 203 |
| | Cherry Hinton | Feb 10 – May 10 | 21 | 6 | 34 | 2 | 0 | 12 | 13 | 2 | 26 | 23 | 139 | 128 |
| | | Oct 09 – Jan 10 | 20 | 9 | 19 | 2 | 3 | 15 | 9 | 0 | 19 | 22 | 118 | 101 |
| | | Feb 09 – May 09 | 25 | 13 | 33 | 2 | 7 | 8 | 15 | 0 | 48 | 35 | 186 | 137 |
| | Queen Edith | Feb 10 – May 10 | 14 | 13 | 35 | 1 | 2 | 11 | 31 | 1 | 20 | 48 | 176 | 116 |
| | | Oct 09 – Jan 10 | 37 | 14 | 16 | 1 | 4 | 20 | 46 | 2 | 24 | 42 | 206 | 129 |
| | | Feb 09 – May 09 | 22 | 18 | 23 | 2 | 2 | 20 | 55 | 0 | 23 | 57 | 222 | 145 |